

Project Focus London South Bank University

DMA Signs have recently completed an integrated signage project for London South Bank University, after successfully winning the contract, through the GPS framework, as the new approved intrinsic supplier for the Universities signage needs, for the next 3 years.

Over the past year the University has re-branded its corporate identity, undergone building refurbishment works, implemented the Green Route, a wayfinding scheme to help improve staff, students and visitors navigate through the connecting buildings, along with the ongoing requirements for new signage, often with short lead times and out of hours installation.

A variety of signage products have been implemented across the University to cater for different requirements. DMA has created a

bespoke range of sign types for the University and has worked closely with in-house personnel to adhere to and enhance all branding requirements.

Through extensive research and site visits, we have been able to give the University the best possible advice and guidance on choosing suitable product types, and positioning signage appropriately to achieve the most effective results.

DMA's working relationship with the University enables our teams to be familiar with the complex site and company policies, so disruption is kept to an absolute minimum.

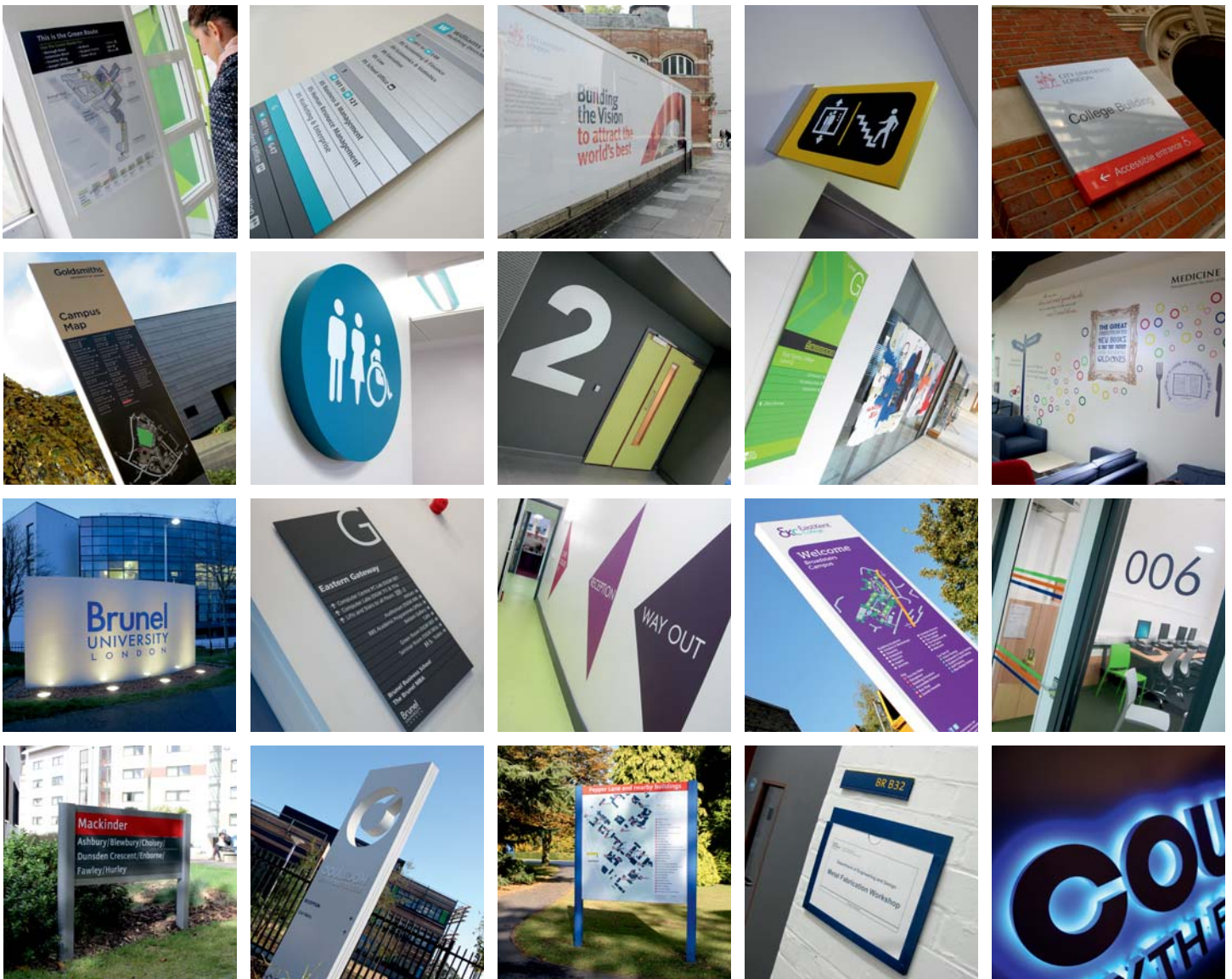


Registered in England No: 4293985

photo gallery and case studies available online
www.dmasigns.co.uk

call today
01372 363808

email your enquiry
projects@dmasigns.co.uk



wayfinding **signage** solutions

Education signage

- We do everything it takes to project your brand in the best possible way
- Meticulous planning and project management of rebranding and rollout programmes
- Over thirty-five years of experience, we are tried, tested and proven
- Trusted relationships with leading Organisations, Government Departments & Education Authorities
- A full range of bespoke signs, custom-designed and manufactured to your requirements
- One stop shop from consultation and design through to professional installation
- Fast response, routinely working to very tight deadlines
- Development in energy-efficient sustainable signage
- Competitive prices and long term value for money



DMA signs

Head Office (South East)
Unit 6, Bridge Works
Kingston Road
Leatherhead
Surrey
KT22 7SU

Midlands Office
PO Box 15773
Oldbury
West Midlands
B69 9EJ

South West Office
PO Box 103
Pontypridd
Cardiff
Wales
CF37 9DZ



Registered in England No: 4293985

further information available online
www.dmasigns.co.uk

call today
01372 363808

email your enquiry
projects@dmasigns.co.uk