

Project Focus Goldsmiths University of London

DMA Signs has delivered extensive signage and wayfinding solutions for Goldsmiths University of London. After initially securing a recent competitive tendering exercise and knowing that best value would be key, DMA Signs focussed its bid on being cost-effective, compliant and competent whilst displaying a high level of customer service.

To remain competitive every area of the specification was meticulously considered, including the removal of old redundant signage and making good. Best value for money and best quality were the two deciding factors that secured the project and DMA Signs are the trusted business partner and approved supplier to the University.

Elegant, robust and flexible, the Modular Sign System was selected as the Internal Signing system of choice and provided Goldsmiths with an appropriate solution that was sympathetic to the existing Grade I listed architecture. Bespoke external monolith and building identification signs were also fabricated in-house by DMA's production facility, to further the Universities branding across multiple locations. DMA Signs were also responsible for creating a detailed wayfinding strategy, and designing the artwork for the projects.

DMA Signs have installed over 3000 signs over a 3 year period and continue to supply high quality signage, wayfinding and design advice to the University, on a regular basis under the framework contract.

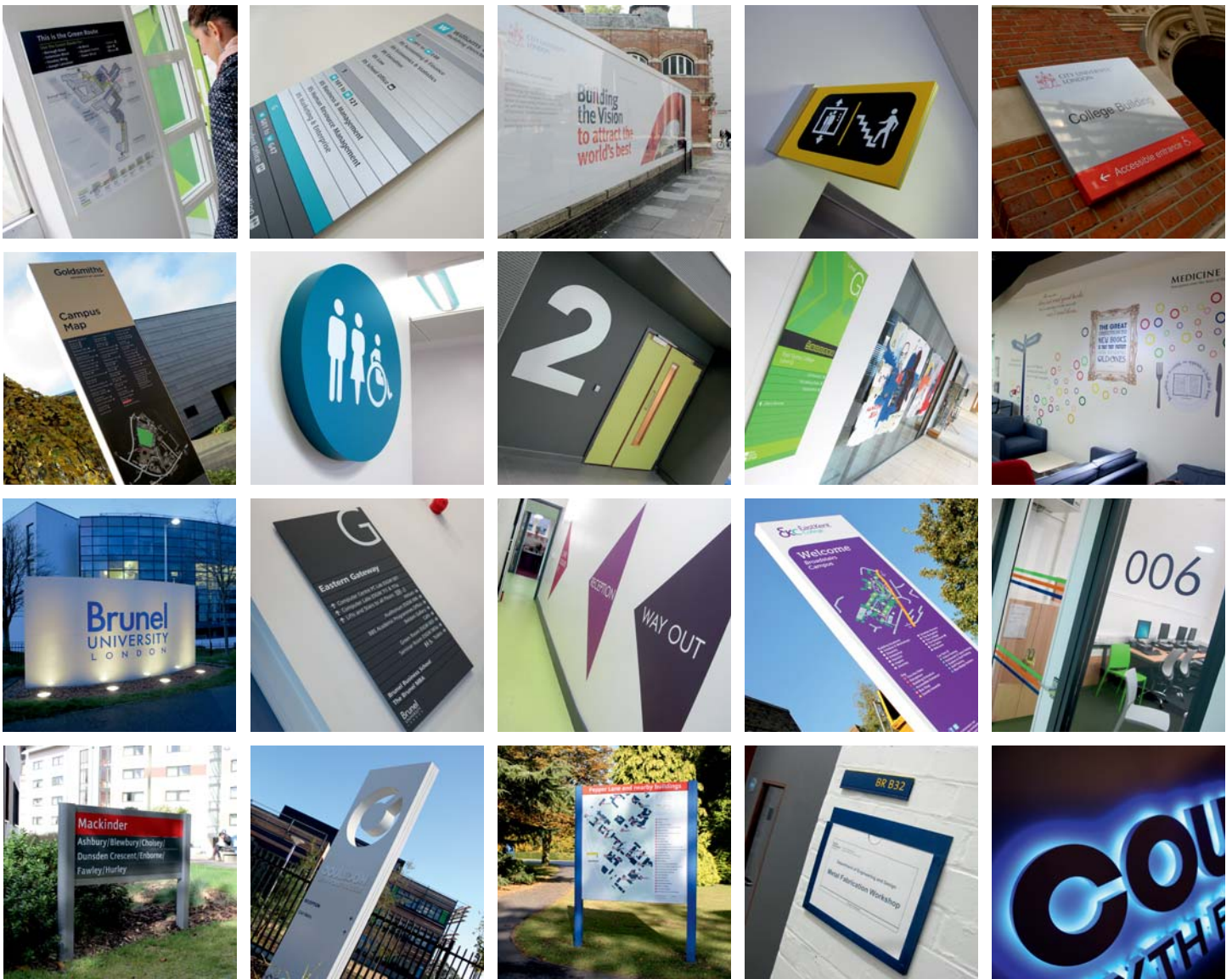


Registered in England No: 4293985

photo gallery and case studies available online
www.dmasigns.co.uk

call today
01372 363808

email your enquiry
projects@dmasigns.co.uk



wayfinding **signage** solutions

Education signage

- We do everything it takes to project your brand in the best possible way
- Meticulous planning and project management of rebranding and rollout programmes
- Over thirty-five years of experience, we are tried, tested and proven
- Trusted relationships with leading Organisations, Government Departments & Education Authorities
- A full range of bespoke signs, custom-designed and manufactured to your requirements
- One stop shop from consultation and design through to professional installation
- Fast response, routinely working to very tight deadlines
- Development in energy-efficient sustainable signage
- Competitive prices and long term value for money



DMA signs

Head Office (South East)
Unit 6, Bridge Works
Kingston Road
Leatherhead
Surrey
KT22 7SU

Midlands Office
PO Box 15773
Oldbury
West Midlands
B69 9EJ

South West Office
PO Box 103
Pontypridd
Cardiff
Wales
CF37 9DZ



Registered in England No: 4293985

further information available online
www.dmasigns.co.uk

call today
01372 363808

email your enquiry
projects@dmasigns.co.uk